

## SRS3000 1U Splice and Patch Shelf

**Prysmian Part Number:** *See table on following pages.*



The SRS3000 Splice and Patch Shelf is a modular unit available in a variety of configurations for integration in to 19" and ETSI racks, street side or wall mounted cabinets. The product consists of a metal chassis, a plastic light weight splice and patch module and a cable anchoring system. The product has a capacity of up to 48 fibres in a 1U unit for SC and LC type connectors, and up to 24 fibres for FC, ST and E2000 type connectors. The panel has in built fibre management to ensure the product is installed correctly and the same every time by installers.

The shelf is fully compatible with all optical cable types, with blown fibre tube cables and can be configured to hold optical devices (i.e. splitters & WDM's) on request.

### Features and Benefits

- Modular panel design enables easy capacity upgrades from 12 to 48 fibres.
- Very high splice and patch density of 48 fibres for SC and LC connector types in 1U.
- High splice and patch density of 24 fibres for ST, FC and E2000 connector types in 1U.
- Suitable for installation into 19"/ ETSI / ANSI racks, wall mounted cabinets and street-side cabinets.
- Splice and patch module pivots outwards for easy fibre access and maintenance.
- The drop down front panel prevents accidental disconnection of patch-cords and provides additional space for patchcord routing during installations.
- All fibres are positively bend managed to a 30mm radius
- Supplied with a large cover label and front panel labels for easy identification and data recording.
- Splice and patch bay is covered with a detachable lid (secured with two screws) to protect the splices and pigtails once installed.
- The panel can be used for optical splitters and other passive devices in alternative configurations. Please contact Prysmian for further information.
- Can accommodate most cable types including blown fibre tube cables.

**Note:** for 48f 1U shelves a 2mm Patch-cord size should be used.

### Ordering information

The SRS3000 Splice and Patch Shelf can be ordered as a fully configured unit with either 12, 24 or 48 pigtails and adapters dependant on connector style. The unit can also be supplied empty, or as a part configured product allowing future capacity upgrades.

For kit contents and part numbers for the various configurations, please use the tables on the following pages.

### Additional Items - Required

- Splice Protectors

### Additional Items - Optional

- Crimp Splice Protector Holders
- ETSI Conversion Brackets
- Rear Mounting Brackets
- Rack Fixing Kit
- ARS Cable Anchor (additional)
- Upgrade Kits
- Blown Fibre Manifold
- Patch-cords (see datasheet AC004)

## Technical Data

- Max number of terminations: 48 for SC or LC connectors  
24 for FC, ST and E2000 connectors
- Max number of patchcords out: 48 with 2mm diameter patch cords
- Max Cable Diameter: 14mm
- Required space envelope (mm): (w) 480 x (d) 245 x (h) 44.5
- Operating temperature: -20°C to + 60°C (5 to 93% RH)
- Material: -
  - Metalwork: Mild Steel
  - Plastics: High Impact Polystyrene
- Finish: -
  - Metalwork: Painted light grey RAL 7035
  - Plastics: Light Grey RAL 7035
- Testing: -
  - Optical: Tested at 1310nm,1550nm and 1625nm
  - Dry heat: BS EN 60068-2-2 Test Bb
  - Damp heat: IEC 60068-2-3: 1969
  - Change of temperature: IEC 60068-2-14: 1984
  - Vibration: IEC 60068-2-6: 1995
  - Shock: IEC 60068-2-27: 1987

## Logistics

- Packing Dimensions (mm): (w) 560 x (d) 290 x (h) 175
- Packed Weight (kg): 2.95
- Net weight (kg): 2.40

## Pigtail Technical Data

Pigtails are supplied with either xx/UPC or xx/APC connectors.

xx/UPC connectors can be used in cases where xx/PC or xx/SPC connectors are required.

For technical data on the pigtails supplied refer to Prysmian data sheet AC003

## Part Numbers

### SRS3000 - Splice and Patch Shelves

The SRS3000 Splice and Patch Shelf is supplied with a cable anchor kit (ARS type), bend limiting tube, the required number of splice protector holders (for 2.2mm heat shrink. For crimp splice protector holders, see additional items) cable tie wraps, a patchcord bend manager and a rack fixing kit. Pigtails and adapters are also supplied installed by Prysmian where required. Please refer to the part number tables below and on the following page.

Part number	Connector type	Supplied with	Upgradeable	Upgrade Part Number
SRS1-001	None	Two blanking plates to be upgraded later	Yes to 48	Various. See page 5

Part number	Connector type	Fibre type	Adaptor type	No of Fibres	Upgradeable	Upgrade Part Number
SRS1-002	FC/UPC	S/mode	Simplex	12	Yes to 24	XSRSC00288
SRS1-003	FC/UPC	S/mode	Simplex	24	No	N/A
SRS1-004	FC/APC	S/mode	Simplex	12	Yes to 24	XSRSC00291
SRS1-005	FC/APC	S/mode	Simplex	24	No	N/A
SRS1-006	FC	62.5/125	Simplex	12	Yes to 24	XSRSC00289
SRS1-007	FC	62.5/125	Simplex	24	No	N/A
SRS1-008	FC	50/125	Simplex	12	Yes to 24	XSRSC00290
SRS1-009	FC	50/125	Simplex	24	No	N/A

Part number	Connector type	Fibre type	Adaptor type	No of Fibres	Upgradeable	Upgrade Part Number
SRS1-010	SC/UPC	S/mode	Simplex	12	Yes to 24	XSRSC00292
SRS1-011	SC/UPC	S/mode	Simplex	24	No	N/A
SRS1-012	SC/UPC	S/mode	Duplex	12	Yes to 24	XSRSC00296
SRS1-013	SC/UPC	S/mode	Duplex	24	No	N/A
SRS1-014	SC/UPC	S/mode	Quad *	24	Yes to 48	XSRSC00344
SRS1-015	SC/UPC	S/mode	Quad *	48	No	N/A
SRS1-016	SC/APC	S/mode	Simplex	12	Yes to 24	XSRSC00295
SRS1-017	SC/APC	S/mode	Simplex	24	No	N/A
SRS1-018	SC/APC	S/mode	Duplex	12	Yes to 24	XSRSC00299
SRS1-019	SC/APC	S/mode	Duplex	24	No	N/A
SRS1-020	SC/APC	S/mode	Quad *	24	Yes to 48	XSRSC00345
SRS1-021	SC/APC	S/mode	Quad *	48	No	N/A
SRS1-022	SC	62.5/125	Simplex	12	Yes to 24	XSRSC00293
SRS1-023	SC	62.5/125	Simplex	24	No	N/A
SRS1-024	SC	62.5/125	Duplex	12	Yes to 24	XSRSC00297
SRS1-025	SC	62.5/125	Duplex	24	No	N/A
SRS1-026	SC	62.5/125	Quad *	24	Yes to 48	XSRSC00346
SRS1-027	SC	62.5/125	Quad *	48	No	N/A
SRS1-028	SC	50/125	Simplex	12	Yes to 24	XSRSC00294
SRS1-029	SC	50/125	Simplex	24	No	N/A
SRS1-030	SC	50/125	Duplex	12	Yes to 24	XSRSC00298
SRS1-031	SC	50/125	Duplex	24	No	N/A
SRS1-032	SC	50/125	Quad *	24	Yes to 48	XSRSC00347
SRS1-033	SC	50/125	Quad *	48	No	N/A

\* Note For SC connectors where Quad is described, this is actually two duplex adapters next to each other.

## Part Numbers continued

### SRS3000 Splice and Patch Shelves continued

Part number	Connector type	Fibre type	Adaptor type	No of Fibres	Upgradeable	Upgrade Part Number
SRS1-034	LC/UPC	S/mode	Duplex	24	Yes to 48	<a href="#">XSRSC00300</a>
SRS1-035	LC/UPC	S/mode	Duplex	48	No	N/A
SRS1-036	LC/UPC	S/mode	Quad	24	Yes to 48	<a href="#">XSRSC00304</a>
SRS1-037	LC/UPC	S/mode	Quad	48	No	N/A
SRS1-038	LC/APC	S/mode	Duplex	24	Yes to 48	<a href="#">XSRSC00303</a>
SRS1-039	LC/APC	S/mode	Duplex	48	No	N/A
SRS1-040	LC/APC	S/mode	Quad	24	Yes to 48	<a href="#">XSRSC00307</a>
SRS1-041	LC/APC	S/mode	Quad	48	No	N/A
SRS1-042	LC	62.5/125	Duplex	24	Yes to 48	<a href="#">XSRSC00301</a>
SRS1-043	LC	62.5/125	Duplex	48	No	N/A
SRS1-044	LC	62.5/125	Quad	24	Yes to 48	<a href="#">XSRSC00302</a>
SRS1-045	LC	62.5/125	Quad	48	No	N/A
SRS1-046	LC	50/125	Duplex	24	Yes to 48	<a href="#">XSRSC00305</a>
SRS1-047	LC	50/125	Duplex	48	No	N/A
SRS1-048	LC	50/125	Quad	24	Yes to 48	<a href="#">XSRSC00306</a>
SRS1-049	LC	50/125	Quad	48	No	N/A

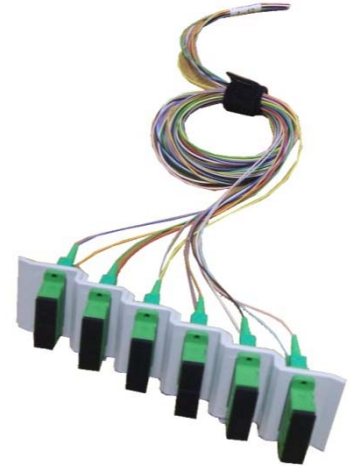
Part number	Connector type	Fibre type	Adaptor type	No of Fibres	Upgradeable	Upgrade Part Number
SRS1-050	E2000/UPC	S/mode	Simplex	12	Yes to 24	<a href="#">XSRSC00308</a>
SRS1-051	E2000/UPC	S/mode	Simplex	24	No	N/A
SRS1-052	E2000/APC	S/mode	Simplex	12	Yes to 24	<a href="#">XSRSC00311</a>
SRS1-053	E2000/APC	S/mode	Simplex	24	No	N/A
SRS1-054	E2000	62.5/125	Simplex	12	Yes to 24	<a href="#">XSRSC00309</a>
SRS1-055	E2000	62.5/125	Simplex	24	No	N/A
SRS1-056	E2000	50/125	Simplex	12	Yes to 24	<a href="#">XSRSC00310</a>
SRS1-057	E2000	50/125	Simplex	24	No	N/A

Part number	Connector type	Fibre type	Adaptor type	No of Fibres	Upgradeable	Upgrade Part Number
SRS1-058	ST/UPC	S/mode	Simplex	12	Yes to 24	<a href="#">XSRSC00341</a>
SRS1-059	ST/UPC	S/mode	Simplex	24	No	N/A
SRS1-060	ST	62.5/125	Simplex	12	Yes to 24	<a href="#">XSRSC00342</a>
SRS1-061	ST	62.5/125	Simplex	24	No	N/A
SRS1-062	ST	50/125	Simplex	12	Yes to 24	<a href="#">XSRSC00343</a>
SRS1-063	ST	50/125	Simplex	24	No	N/A

## Additional Items

### Upgrade kits

The Upgrade kit is used to increase the capacity of modules that have been supplied empty, are partially populated. The kit enables additional fibres to be installed within the SRS3000 Shelf. The kit comprises of an adaptor plate, adaptors, pigtails and a splice holder (2.2mm heat shrink type. For crimp splice holders see additional items).



Connector type	Fibre type	Adaptor type	Fibres	Part number
FC/UPC	S/mode	Simplex	12	XSRSC00288
FC/APC	S/mode	Simplex	12	XSRSC00291
FC	62.5/125	Simplex	12	XSRSC00289
FC	50/125	Simplex	12	XSRSC00290
SC/UPC	S/mode	Simplex	12	XSRSC00292
SC/UPC	S/mode	Duplex	12	XSRSC00296
SC/UPC	S/mode	Quad *	24	XSRSC00344
SC/APC	S/mode	Simplex	12	XSRSC00295
SC/APC	S/mode	Duplex	12	XSRSC00299
SC/APC	S/mode	Quad *	24	XSRSC00345
SC	62.5/125	Simplex	12	XSRSC00293
SC	62.5/125	Duplex	12	XSRSC00297
SC	62.5/125	Quad *	24	XSRSC00346
SC	50/125	Simplex	12	XSRSC00294
SC	50/125	Duplex	12	XSRSC00298
SC	50/125	Quad *	24	XSRSC00347
LC/UPC	S/mode	Duplex	24	XSRSC00300
LC/UPC	S/mode	Quad	24	XSRSC00304
LC/APC	S/mode	Duplex	24	XSRSC00303
LC/APC	S/mode	Quad	24	XSRSC00307
LC	62.5/125	Duplex	24	XSRSC00301
LC	62.5/125	Quad	24	XSRSC00305
LC	50/125	Duplex	24	XSRSC00302
LC	50/125	Quad	24	XSRSC00306
E2000UPC	S/mode	Simplex	12	XSRSC00308
E2000APC	S/mode	Simplex	12	XSRSC00311
E2000	62.5/125	Simplex	12	XSRSC00309
E2000	50/125	Simplex	12	XSRSC00310
ST/UPC	S/mode	Simplex	12	XSRSC00341
ST	62.5/125	Simplex	12	XSRSC00342
ST	50/125	Simplex	12	XSRSC00343

\* Note For SC connectors where Quad is described, this is actually two duplex adapters next to each other.

## Additional Items continued

### Heatshrink Splice Protector

Splice protectors are used to protect the fibre splice. They are 2.2mm in diameter and 45mm in length.

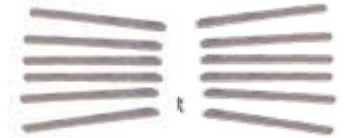
*Prysmian Part No. - XPESC00053 (pack of 50)*  
*- XKTSC00050 (pack of 12)*



### Crimp Splice Protectors

Crimp Splice Protectors are used to protect the fibre splice. They are 1.3mm wide x 3.2mm high x 30mm long.

*Prysmian Part No. - XKTSC00078 (pack of 50)*  
*XKTSC00079 (pack of 12)*



### Splice Protector Holders

Crimp splice protector holders are used to install crimp splices into the SRS3000 shelf. They are supplied as a pack of 10 pieces with each piece able to accommodate 12 crimp splice protectors. Heat shrink splice protector holders are used to install heat shrink splices of 2.2mm into the SRS300 shelf. They are also sold as a pack of 10. Note that heat shrink splice protector holders are already supplied with the shelf and this kit is intended for spares only.

*Prysmian Part No. - XSRSC00358 (pack of 10) - Crimp Splice Protectors*  
*- XKTSC00377 (pack of 10) - Heat Shrink Splice Protectors*



### ETSI Conversion Brackets.

ETSI conversion brackets enable the SRS3000 shelf to be installed into an ETSI rack. They are secured to the unit using four fixing screws.

*Prysmian Part No. - XKTSC00171 Grey*



### Rear Mounting Bracket

The Rear Mounting Bracket is used to install an SRS3000 shelf into a rear mounted rack. The bracket simply bolts to the back of the SRS shelf and provides fixing holes for securing to a rear mounted 19" rack.

*Prysmian Part No. - XSRSC00361*

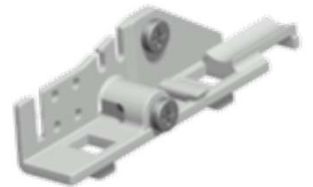


---

## Additional Items continued

### SRS - ARS Cable Anchor Kit

The ARS Cable Anchor kit is used to install an additional cable into an SRS3000 shelf. The kit enables a single cable to be anchored and for the fibres to be distributed onto the shelf. The ARS is suitable for cables between 12 and 48 fibres. Bend limiting routing tubes to protect the fibres being routed to the shelf are also supplied in the kit. The ARS also allows for the anchoring / termination of both the cable strength member and any Aramid with in the cable construction.



*Prysmian Part No. – XSRSC00360*

---

### Blown Fibre Manifold

The Blown Fibre Manifold is used to take up to 6 blown fibre tubes of 5mm in diameter onto one SRS3000 shelf. The manifold fits onto the back of the SRS3000 shelf and is supplied with a protective cover.



*Prysmian Part No. – XKTSC00257*

---

### Connector Removal Tool

The connector removal tool is used to aid removal of SC connectors in applications where a 48 fibre shelf is used. In this application the connectors are close together and can be difficult to remove by hand. The removal tool allows the installer to remove the connector with ease.



*Prysmian Part No. – XKTSC00286*

---

Please contact your local sales office listed on [www.prysmiangroup.com](http://www.prysmiangroup.com)

---

© Prysmian Group 2014, All Rights Reserved.  
The information contained within this document must not be copied, reprinted or reproduced in any form, either wholly or in part, without the written consent of Prysmian Group. The information is believed correct at the time of issue. Prysmian Group reserves the right to amend this specification without notice. This specification is not contractually valid unless specifically authorised by Prysmian Group.

---