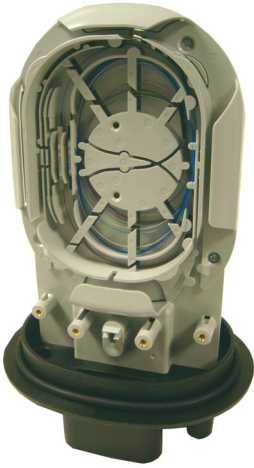


## QUICKDR@W® Connectorised Lead-in Joint (CLJ) – MK 3

**Prysmian Part Numbers: See Below**



Shown above & ordered separately is the 2f Lead-In Assembly(LIA) MK 3



The QUICKDR@W CLJ MK 3 is a purpose built customer access termination that allows the rapid and incremental activation of customer services utilising simple practices. The CLJ allows the plug in connection of up to 8 individual customer lead-in cables at the time of service activation. The CLJ is designed to be cascaded on a single distribution cable for optimised network design and can be used in all types of PON and PTP network configurations. The customer lead-in cables are supplied for a single fibre connection with SC or LC connector types supplied at both ends of the lead-in cable assembly.

### Features and Benefits

- The system is designed for one-man customer connection using semi-skilled labour, thus significantly reducing the cost of subscriber connections.
- Up to 8 pre-connectorised QUICKDR@W Lead-in Assemblies MK 3 can be individually installed into the lead-in seal ports.
- Deferred installation cost through incremental customer connection.
- Skilled labour required for initial CLJ installation in the distribution phase. Subsequent lead-in cable connections require only minimal training.
- The joint can be supplied with SC type adapters and pigtails pre-installed for single fibre applications, or LC type adapters and pigtails pre-installed for dual fibre applications.
- The CLJ can also be supplied with pre-installed connectorised passive splitters (1x8 or 1x16).
- The joint allows the storage of a continuous loop of loose tube cable elements within the dedicated storage area at the front of the closure.
- All fibres are positively managed to a 30mm bend radius.
- The closure base contains one oval port, eight lead-in seal ports and two circular ports for spurs from the main cable loop.
- The CLJ closure is sealed to IP68.
- The CLJ is compatible with a range of Prysmian produced optical cables which can be used to distribute the fibres to each unit. Please contact Prysmian to discuss your specific requirements.

### Kit Contents

The QUICKDR@W Connectorised Lead-in Joint MK3 is supplied with a splice tray, connector patch panel, pigtails, oval port installation kit, splice protectors and a wall mounting bracket. Options are also available for passive splitters to be pre-installed (1x8 or 1x16)

### Additional Items

- QUICKDR@W Lead-in Assembly MK 3
- Support Tool
- Secondary Splice Tray
- Circular Port Heat Shrinks

### Part Numbers

- XJTSC00526** – CLJ MK3 with 4 x SC/APC
- XJTSC00527** – CLJ MK3 with 8 x SC/APC
- XJTSC00528** – CLJ MK3 with 8 x LC/APC
- XJTSC00529** – CLJ MK3 with 16 x LC/APC
- XJTSC00530** – CLJ MK3 + 1x8 SC/APC splitter
- XJTSC00531** – CLJ MK3 + 1x8 LC/APC splitter
- XJTSC00532** – CLJ MK3 + 1x16 LC/APC splitter

Other configurations available on request.

## Technical Data

- Number of cable ports: 8 (Lead-in Seal), 1 (Oval), 2 (circular)
- Maximum cable diameter (mm): 7 (Lead-in Seal), 21 (Oval), 12 (circular)
- Maximum splice tray capacity: 1 (16 fibres), 1 upgrade (additional 24)
- Maximum capacity: 8 customer connection cables (1f or 2f each)
- Maximum loop capacity: 48 (4 x 12 fibre elements)
- Required space envelope (mm): (l) 300 x (w) 231 x (d) 164 (length 410mm when heat shrink applied)
- Operating temperature: -20°C to + 70°C (5 to 95% RH)
- Sealing: IP68
- Material:-
  - Cap: Glass Filled Polypropylene
  - Base: Glass Filled Polypropylene
  - Splice tray: FR HIPS
- Testing:-
  - Closure sealing: IP68 – AS60529-2004 IEC60529 Ed 2.1 2001
  - Optical: Tested at 1310nm, 1383nm, 1550nm and 1625nm
  - Dry heat: BS EN 60068-2-2 Test Bb
  - Damp heat: IEC 60068-2-3: 1969
  - Change of temperature: IEC 60068-2-14: 1984
  - Vibration: IEC 60068-2-6: 1995
  - Shock: IEC 60068-2-27: 1987

## Logistics

- Packing Dimensions (mm): (l) 480 x (w) 250 x (d) 210
- Packed Weight (kg):- 2.4
- Net weight (kg):- 1.9

## Additional Items

### QUICKDR@W Lead-in Assembly MK 3

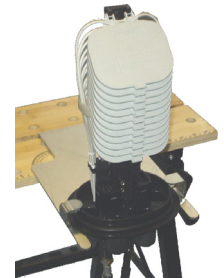
The Quickdraw Lead In Assembly MK3 is a pre-connectorised cable for the CLJ. The assembly contains all of the components required to install one pre-connectorised cable between the CLJ and the customer premise. The cables are supplied on reels in various standard lengths and are available in 1F or 2F versions.



**Prysmian Part No. – See QUICKDR@W Lead-in Assembly MK3 data sheet - OP024**

### Support Tool

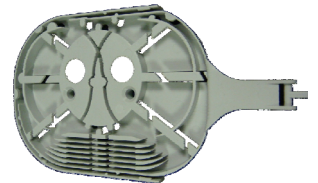
The Compact Joint support tool allows the user to support an Compact Joint or CLJ within a portable workbench. The bracket is designed to fit most commercially available workbenches. It is dimensioned to enable a splicing machine to be placed on the workbench for close access to the splicing trays.



**Prysmian Part No. – XJTSC00075**

### Secondary Splice Tray

The CLJ MK3 Secondary splice tray can be used to upgrade the splicing capacity of the CLJ MK3. The splice tray can accommodate 24 fibre splices and is used in applications where a spur cable is required to be dropped from the primary looped cable.



**Prysmian Part No. – XJTSC00533**

### CLJ Cable Entry Kit

The CLJ Cable Entry Kit is used to install an additional cable into one of the two circular ports. The kit comprises of a cable heat shrink, aluminium foil and an alcohol wipe.



**Prysmian Part No. – XkTSC00401**

Please contact your local sales office listed on [www.prysmiangroup.com](http://www.prysmiangroup.com)

© Prysmian Group 2012, All Rights Reserved.

The information contained within this document must not be copied, reprinted or reproduced in any form, either wholly or in part, without the written consent of Prysmian Group. The information is believed correct at the time of issue. Prysmian Group reserves the right to amend this specification without notice. This specification is not contractually valid unless specifically authorised by Prysmian Group.