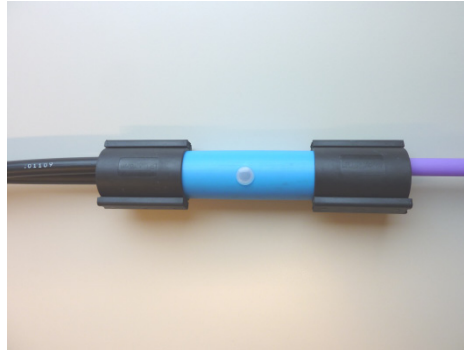


Retractanet^{XS} Cable End Seals

Prysmian Part Number: See page 2



Single version



Multiple version



The Retractanet^{XS} cable end seal is used on Retractanet^{XS} cable ends to provide water tightness and tension relief at the point of a splice closure entry port or a PoP building wall entry.

Both the Retractanet^{XS} cable sheath and the Retractanet^{XS} fibre modules are mechanically interconnected in a protective tube by means of a two component polyurethane filling compound.

The seals are available as single and multiple version.

Features and Benefits

- For all Retractanet^{XS} cables and cable combinations up to 18 mm.
- Watertight IP68.
- Tension relief on Retractanet^{XS} cable and Retractanet^{XS} fibre modules.
- Direct buried application.
- Crush and impact resistant.

Kit Contents

Single version:

- 1x Protective HDPE tube
- 1x Foam tape 80x15x2 mm
- 2x Foam tape 200x20x10mm
- 1x Two component PUR resin
- 1x emery cloth
- 1x set protective gloves
- 1x nozzle
- 1x cap

Multiple version:

- 1x Protective HDPE tube
- 2x Cable entry seal
- 2x Foam tape 80x15x2 mm
- 1x Two component PUR resin
- 1x emery cloth
- 1x set protective gloves
- 1x nozzle
- 1x cap

Technical Data

• Number of cable ports:	Single version: 1 port on each side Multiple version: combinations of 1, 3 or 6 ports
• Cable retention	18 mm cable: 400 N 15 mm cable: 330 N 6 mm cable: 25 N
• Fibre module retention	1.25 mm fibre module: 25 N
• Crush resistance	1000N/10 cm @ 20°C
• Impact resistance	10 Nm @ 20°C, radius 200 mm
• Water immersion	IP68 (no water ingress at 5 meter water pressure for 7 days)
• Application area	Group 1 in accordance with EN 124, 25 cm below surface level
• Temperature range	Transport & storage: -10°C - +50°C (short term < 14 days) +10°C - +35°C (long term) Installation -10°C - +50°C Processing temperature +10°C - +35°C (2 component resin) Operation -20°C - +60°C
• Curing time	Installation after 5 minutes, completely cured after 30 minutes
• Dimensions	Single version: (l) 240 mm x (w) 25 mm x (d) 25 mm Multiple version: (l) 200 mm x (w) 40 mm x (d) 40 mm

Logistics

Single version

• Packing Dimensions (mm):	Box 1 piece: (l) 252 x (w) 129 x (d) 44
• Packed Weight (kg):	0.18
• Net Weight (kg):	0.15
• Installation Instructions Included	

Multiple version

• Packing Dimensions (mm):	Box 2 pcs: (l) 300 x (w) 240 x (d) 90
• Packed Weight (kg):	0.50
• Net Weight (kg):	0.45
• Installation Instructions Included	

Partnumber	Right port size [mm]	Left port size [mm]
XJTSC01229	1 x ≤ 18	1 x ≤ 18
XJTSC01444	3 x 15	3 x 14
XJTSC01445	1 x 18 + 1 x 15	3 x 14
XJTSC01446	1 x 18	3 x 14
XJTSC01545	3 x 15	12 x 6

Please contact your local sales office listed on www.prysmiangroup.com

© Prysmian Group 2013, All Rights Reserved.
The information contained within this document must not be copied, reprinted or reproduced in any form, either wholly or in part, without the written consent of Prysmian Group. The information is believed correct at the time of issue. Prysmian Group reserves the right to amend this specification without notice. This specification is not contractually valid unless specifically authorised by Prysmian Group.