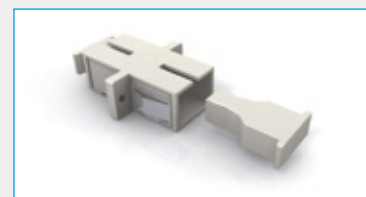


Fibre Adaptors

7.4. MPO/MTP Solution

Specification

Operating temperature SC / LC	- 40 °C to + 80 °C
Operating temperature ST / FC	- 25 °C to + 70 °C
Insertion loss All	≤ 0.20 dB (SM) ; ≤ 0.10 dB (MM)



Technical data

Item No.	SAP Description	Material Description	Items per packaging unit
YOABP01422	UC COSF OA FC ME	FC Adaptor, SM, Zr(Ceramic ferrule). Sleeve metal	250
YOABP01423	UC COMF OA FC ME	FC Adaptor, MM, Zr. Sleeve metal	250
YOABP01424	UC COSF OA SC PL	SC Adaptor, Simplex SM, Zr, Blue, Plastic	250
YOABP01425	UC COMF OA SC PL	SC Adaptor, Simplex MM, Zr Beige, Plastic	250
YOABP01426	UC COSF OA SC PL	SC Adaptor, Duplex SM, Zr Blue Plastic	250
YOABP01427	UC COMF OA SC PL	SC Adaptor, Duplex MM, Zr Beige Plastic	250
YOABP01430	UC CAO F OA MT PL	MTRJ adapter(SM/MM) Plastic, Without needle	250
YOABP01431	UC CAO F OA MP PL	MTP / MPO adapter(SM/MM) Plastic, Without needle	250
YOABP01432	UC COSF OA ST ME	ST Adapter SM, Zr. Sleeve, Metal	250
YOABP01433	UC COMF OA ST ME	ST Adapter MM, Zr Sleeve, Metal	250
YOABP01434	UC COSF OA ST PL	ST Zr Simplex SM Adapter, Plastic Beige (Blue)	250
YOABP01435	UC COMF OA ST PL	ST Zr Simplex MM Adapter, Plastic Beige	250
YOABP01436	UC COSF OA TD PL	ST Zr SM Duplex Adapter, Plastic, Blue	250
YOABP01437	UC COMF OA TD PL	ST Zr MM Duplex Adapter, Plastic, Blue (Beige)	250
YOABP01438	UC COSF OA LC PL	LC-LC SM Zr Simplex adapter, Plastic Blue	250
YOABP01439	UC COMF OA LC PL	LC-LC MM Zr Simplex adapter Plastic, Beige	250
YOABP01440	UC COSF OA LD PL	LC-LC MM Zr Duplex adapter Plastic, Beige	250
YOABP01441	UC COMF OA LD PL	LC-LC SM Zr Duplex adapter Plastic, Blue	250
YOABP01446	UC COMF OA CH ME	SC-ST MM Zr Duplex adapter, Metal	250
YOABP01447	UC COSF OA CH ME	SC-ST SM Zr Duplex adapter, Metal	250
YOABP01448	UC COMF OA SH ME	SC-ST MM Zr Simplex adapter, Metal	250
YOABP01449	UC COSF OA SH ME	SC-ST SM Zr Simplex Adapter, Metal	250
YOABP01450	UC COSF OA LH PL	SC-LC SM Zr Simplex Adapter, Plastic	250
YOABP01451	UC COMF OA LQ	LC-LC MM 4 cores Adapter	250
YOABP01452	UC COSF OA LQ	LC-LC SM 4 cores Adapter	250