

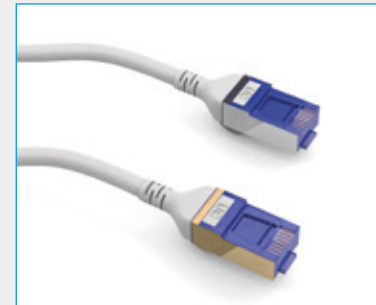
Draka UC^{Connect} Patch-Cords

30awg SlimFlex Category 6a cables with RJ45 connectors for specific channel performance

4.4. Patch Leads

Specification

Item	Description
Flame resistance - PVC	IEC 60332-1
Flame resistance - LSHF	IEC 60332-1, IEC 60754-2, IEC 61034
Standards	EN 50173, ISO/IEC 11801 Amendment 2, IEC 60603-7
Length	1m, 1.5m, 2m, 3m & 5mt



- UC^{Connect} System Patch-Cords
- 30awg Flexible stranded bare copper conductor patch cable
- Mating cycle – 2000 times
- “H-Design” for excellent noise reduction
- Plug contact pin – 50 micro inches gold plated phosphor bronze
- Unique Tangle-free boot design
- 2xRJ45 connector (TIA568-B coding)
- White Outer Sheath
- Latch protector

Technical data

Product code	Product name	Description	Weight	Items per packaging unit
			g	
YPSBP01914	UC C500 PS RS SF WH L00100	S/FTP Cat6a SLIMF Patch cord WHITE LSZH 1M, 30 AWG, SILVER Plug	69	10
YPSBP01915	UC C500 PS RS SF WH L00150	S/FTP Cat6a SLIMF Patch cord WHITE LSZH 1.5M, 30 AWG, SILVER Plug	87	10
YPSBP01916	UC C500 PS RS SF WH L00200	S/FTP Cat6a SLIMF Patch cord WHITE LSZH 2M, 30 AWG, SILVER Plug	92	10
YPSBP01917	UC C500 PS RS SF WH L00300	S/FTP Cat6a SLIMF Patch cord WHITE LSZH 3M, 30 AWG, SILVER Plug	105	10
YPSBP01918	UC C500 PS RS SF WH L00400	S/FTP Cat6a SLIMF Patch cord WHITE LSZH 4M, 30 AWG, SILVER Plug	128	10
YPSBP01919	UC C500 PS RS SF WH L00500	S/FTP Cat6a SLIMF Patch cord WHITE LSZH 5M, 30 AWG, SILVER Plug	146	10
YPSBP01922	UC C500 PS RG SF WH L00100	S/FTP Cat6a SLIMF Patch cord WHITE LSZH 1M, 30 AWG, GOLD Plug	69	10
YPSBP01923	UC C500 PS RG SF WH L00150	S/FTP Cat6a SLIMF Patch cord WHITE LSZH 1.5M, 30 AWG, GOLD Plug	87	10
YPSBP01924	UC C500 PS RG SF WH L00200	S/FTP Cat6a SLIMF Patch cord WHITE LSZH 2M, 30 AWG, GOLD Plug	92	10
YPSBP01925	UC C500 PS RG SF WH L00300	S/FTP Cat6a SLIMF Patch cord WHITE LSZH 3M, 30 AWG, GOLD Plug	105	10
YPSBP01926	UC C500 PS RG SF WH L00400	S/FTP Cat6a SLIMF Patch cord WHITE LSZH 4M, 30 AWG, GOLD Plug	128	10
YPSBP01927	UC C500 PS RG SF WH L00500	S/FTP Cat6a SLIMF Patch cord WHITE LSZH 5M, 30 AWG, GOLD Plug	146	10